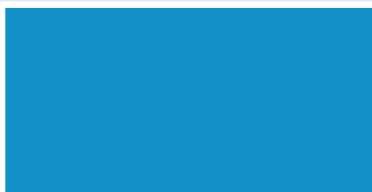
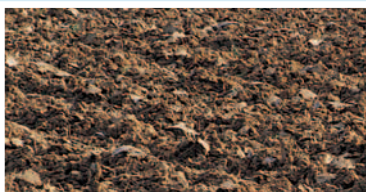


Landini[®]

VEHICLES Powermaster

180 - 200 - 220
AUTOPOWERSHIFT



	POWERMASTER 180 Autopowershift	POWERMASTER 200 Autopowershift	POWERMASTER 220 Autopowershift
Engine			
Iveco Motors (EURO3 / TIER3)	NEF 6 cyl CR TAA	NEF 6 cyl CR TAA	NEF 6 cyl CR TAA
Electronic High Pressure Common Rail turbo/air-to-air intercooler	●	●	●
max. engine power (ISO)	171,4 / 126	198.8 / 146.2	213.8 / 157
engine power with Dual Power for PTO (ISO)	198,8 / 146,2	213,8 / 157	225 / 165,5
rated power (ISO)	167,3 / 123	182,2 / 134	194,5 / 143
rated speed	2200	2200	2200
max. torque (with Dual Power)	551 (747) (590 (800))	590 (800) (626 (850))	626 (850) (700 (949))
max. torque speed (with Dual Power)	1400 (1400)	1400 (1400)	1400 (1500)
max. power speed (with Dual Power)	2000 (1900)	2000 (1900)	1900 (1900)
torque backup (with Dual Power)	40% (38%)	38% (37%)	37% (42%)
bore/stroke	in. mm 4.1/5.2 (104/132)	4.1/5.2 (104/132)	4.1/5.2 (104/132)
displacement/cylinders/valves	cu in. (cm ³) 410 (6728) / 6 / 24	410 (6728) / 6 / 24	410 (6728) / 6 / 24
compression ratio	17.5:1	17.5:1	17.5:1
water cooling	●	●	●
axial air filter with cyclone precleaning stage	●	●	●
air filter ejector	●	●	●
fuel tank capacity	gal. (litres) 92 (350)	92 (350)	92 (350)
Clutch			
multi-disc wet clutch	●	●	●
de-clutch control: button-operated clutch	●	●	●
Transmission			
Autopowershift+rev. shuttle 32FWD+24REV (8 powershift speeds)	●	●	●
Autopowershift+creeper+rev. shuttle: 48FWD+40REV	○	○	○
Eco Forty (25 mph (40 Kph)) at 1900 rpm	●	●	●
Eco Fifty (31 mph (50 Kph))	○	○	○
Reverse Power Shuttle: reverse power shuttle under load	●	●	●
Cruise Control: automatic engine speed control	●	●	●
Electrohydraulic Park lock	●	●	●
Hydra-P.T.O.			
oil-immersed multi-disk PTO	●	●	●
electrohydraulic control	●	●	●
2 speeds 540/1000 rpm	●	●	●
2 speeds: 540E/1000 rpm	○	○	○
1" 3/8 PTO reversible shaft with 6 and 21 splines	●	●	●
1" 3/4 PTO shaft with 20 splines	○	○	○
4WD front axle			
with electronically-controlled hydraulic suspensions	●	●	●
L.S.A. "Landini Suspended Axle"	●	●	●
electrohydraulic 4WD engagement	●	●	●
max. steering angle	55°	55°	55°
Twin-Lock electrohydraulic diff-locks	●	●	●
turning radius	in. (mm) 213 (5400)	213 (5400)	213 (5400)
Brakes			
oil-immersed annular piston rear brakes - 6 discs	●	●	●
4 WD automatic engagement on braking	●	●	●
"Braking booster system" servo brake	●	●	●
hydraulic trailer braking system	○	○	○
Hydraulics			
closed-centre circuit	●	●	●
variable-displacement piston pump	●	●	●
total hydraulic flow	GPM (l/min) 34.4 (130)	34.4 (130)	34.4 (130)
mechanically-operated auxiliary valves	3	3	3
electrohydraulically-operated auxiliary valves with "Can Bus Spool Valve Management"	2	2	2
Power Lift with "Can Bus Lift Control"			
electronically operated	●	●	●
functions: position control, Intermix, float position, shock absorber	●	●	●
max. lift capacity	lb. (kg) 23980 (10900)	23980 (10900)	23980 (10900)
lift capacity at 610 mm	lb. (kg) 17820 (8100)	17820 (8100)	17820 (8100)
cat. 3 three-point linkage	●	●	●
Cab and driving seat			
"Master Class" cab/auto-radio fitting facilities	●	●	●
cabine avec suspension hydraulique à gestion électronique	○	○	○
"Landini Suspended Hydro Cab"	○	○	○
heating / ventilation	●	●	●
automatic air-conditioning	●	●	●
digital control panel with performance monitor	●	●	●
pneumatic suspension seat with "Electronic Armrest"	●	●	●
deluxe buddy seat	●	●	●
Dimensions and weights			
STD front tyres	540/65R30	540/65R30	540/65R30
STD rear tyres	650/65R42	650/65R42	650/65R42
height over cab	in. (mm) 118 (3000)	118 (3000)	118 (3000)
wheelbase	in. (mm) 113.4 (2880)	113.4 (2880)	113.4 (2880)
max. length (with ballast weights)	in. (mm) 216.5 (5500)	216.5 (5500)	216.5 (5500)
ground clearance 4WD	in. (mm) 18.5 (470)	18.5 (470)	18.5 (470)
min. width to the ground	in. (mm) 95 (2415)	95 (2415)	95 (2415)
total weight (without ballast weights)	lb. (kg) 15950 (7250)	15950 (7250)	15950 (7250)
Optional tyres			
front	600/65R28	600/65R28	600/65R28
rear	710/70R38	710/70R38	710/70R38
Optional equipment			
front weights 92.4 lb. (42 kg) each	19	19	19
Front power lift	○	○	○
Front power lift and PTO	○	○	○
front weights for power lift 1980 lb. (900 kg)	○	○	○

Key: STD standard - OPT option - not available